

PINZE CON LAVORAZIONE DEL VETRO

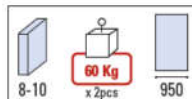
CLAMPS WITH GLASS PREPARATION / KLEMMSCHUHE MIT GLASBEARBEITUNG



V-011-FU

- Pinza per scorrevole in fusione di alluminio vetro 8/10 mm con fori nel vetro verniciata grigia
- Die casted clamp for glass sliding door 8/10 mm with glass preparation silver lacquered
- Klemmschuh gegossen für Ganzglasschiebetür 8/10 mm Glasdicke mit Glasbohrung, silber lackiert

Materiale: **ALLUMINIO PRESSOFUSO**
 Material: **DIE CASTED ALUMINIUM**
 Material: **GEGOSSENES ALUMINIUM**

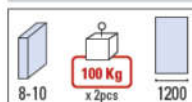


€▶A.594

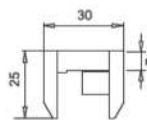
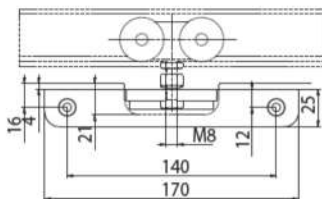
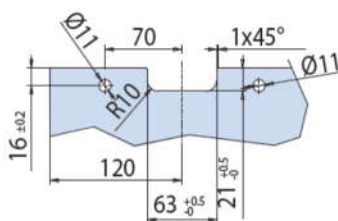
V-011-FR

- Pinza per scorrevole ricavata da materiale pieno, vetro 8/10 mm con fori nel vetro alluminio anodizzato
- Clamp for glass sliding door 8/10 mm with glass preparation aluminium anodised
- Klemmschuh für Ganzglasschiebetür 8/10 mm Glasdicke mit Glasbohrung, EV1

Materiale: **ALLUMINIO TRAFILATO**
 Material: **EXTRUDED ALUMINIUM**
 Material: **STRANGEPRESSTES ALUMINIUM**



€▶A.595



xla39