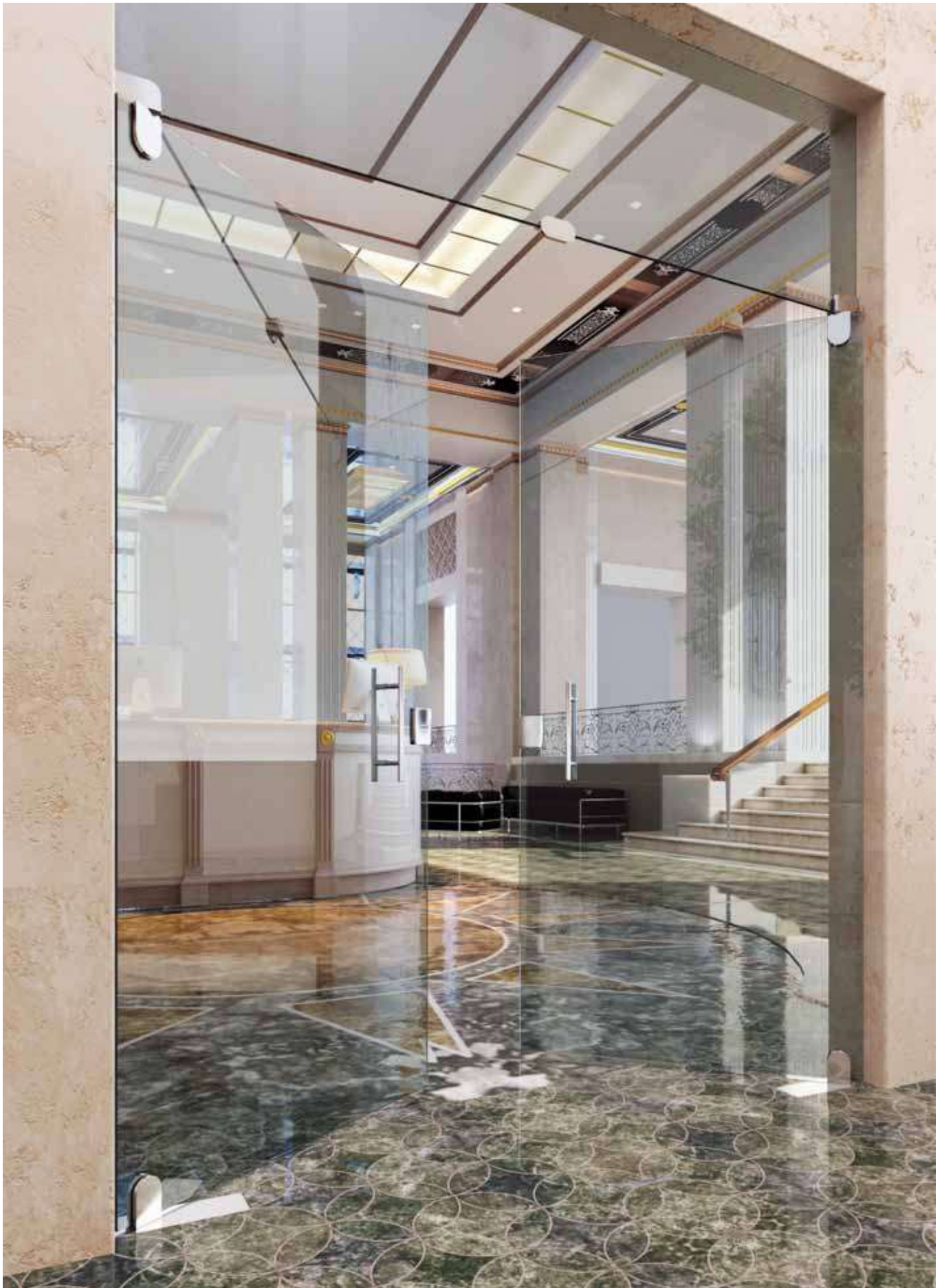
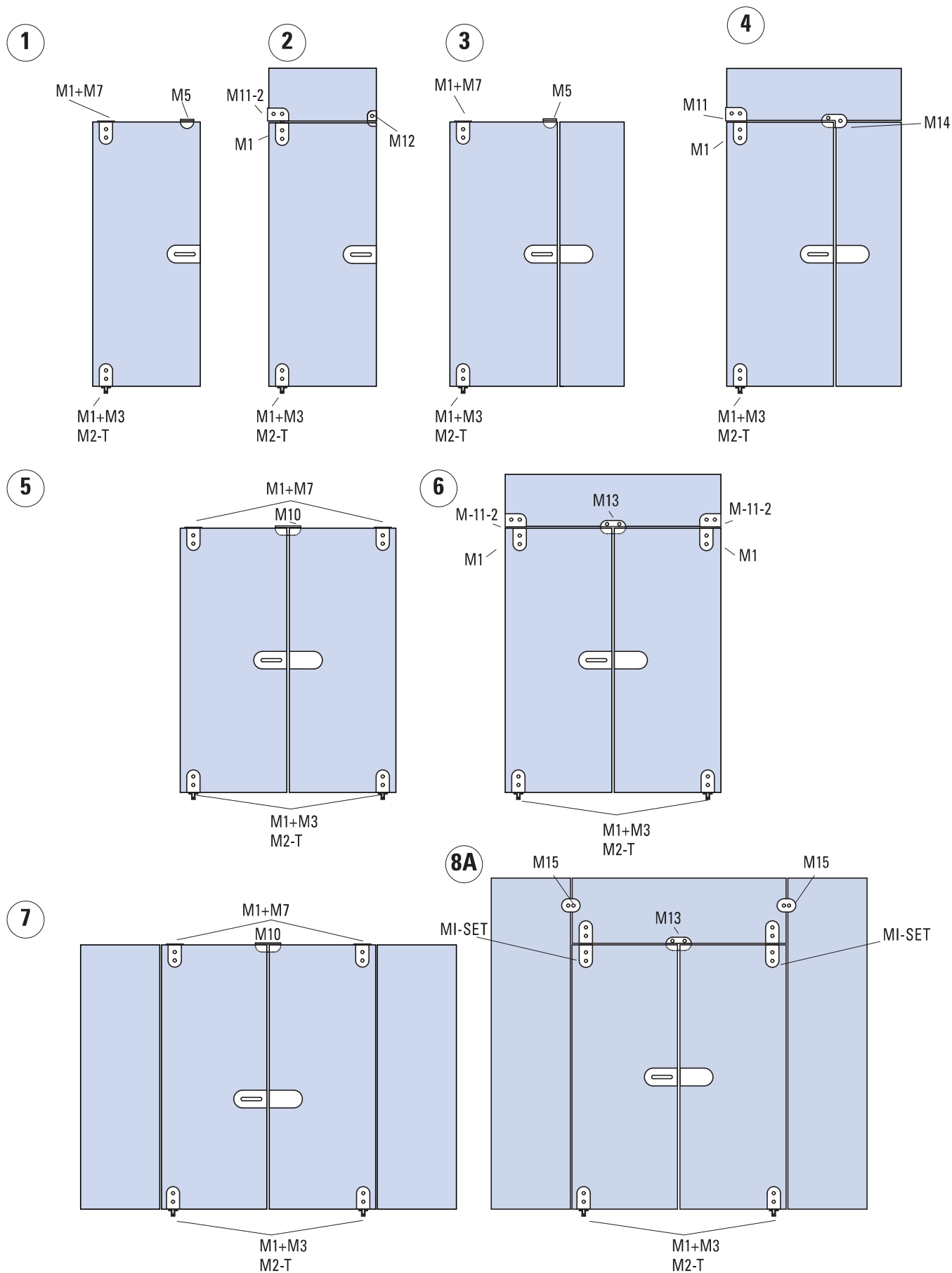


MODULO TONDO

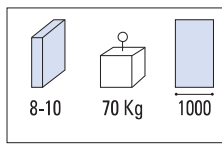
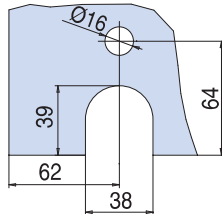
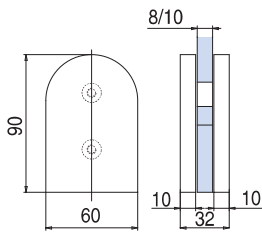


TIPOLOGIA DI APPLICAZIONE / APPLICATION TYPOLOGIES / KOMPOSITIONSMÖGLICHKEITEN DES SYSTEM




- M1** €► G.42
- Cerniera inferiore / superiore.
 - Top / bottom patch.
 - Oberes / Unteres Pendeltürband.

NS

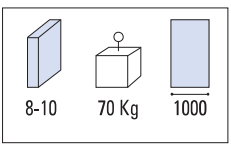
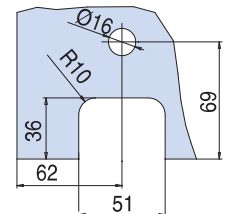
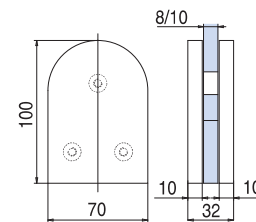


xla76-1



- M2-I** €► G.43
- Cerniera inferiore per pompa Italia.
 - Bottom pivot hinge for square closer.
 - Unteres Pendeltürband für Bodentürschließer mit Vierkant.

NS

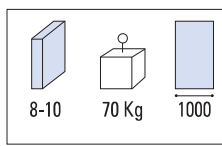
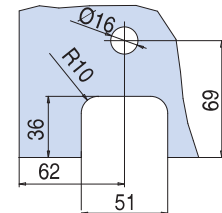
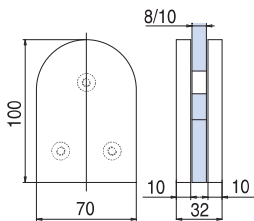


xla76



- M2-T** €► G.44
- Cerniera inferiore per pompa Tedesca.
 - Bottom pivot hinge for german closer.
 - Unteres Pendeltürband für Bodentürschließer mit flachkonischer Achse.

NS

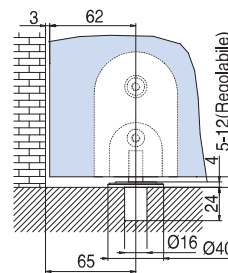


xla76



- M3** €► G.45
- Pozzetto inferiore con perno regolabile.
 - Floor installation bottom pivot ball bearing.
 - Bodenbuchse kugelgelagert zum Einlassen in Mauerwerk.

NS

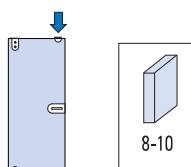
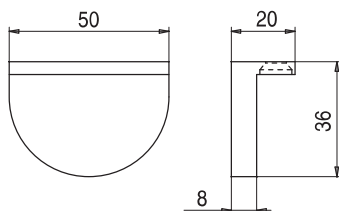


xla77



- M5** €► G.47
- Battuta per porta singola.
 - Single stop with ceiling installation.
 - Anschlag für Deckenbefestigung 1-flg.

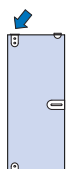
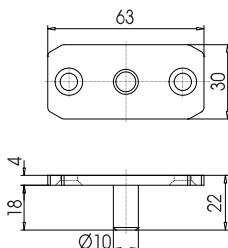
NS



xla78



- MQ-7** €► G.46
- Perno superiore rettangolare.
 - Rectangular top pin.
 - Oberer Zapfen eckig.

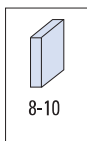
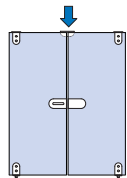
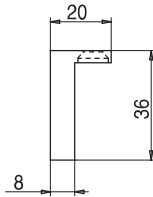
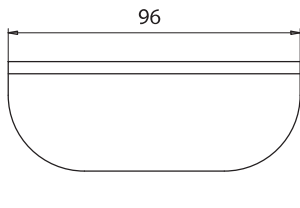


xla268d


M-10

- Battuta per porta doppia.
- Double stop with ceiling installation.
- Anschlag für Deckenbefestigung 2-fig. NS

▶ G.48

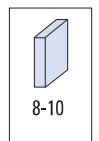
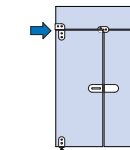
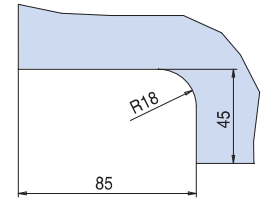
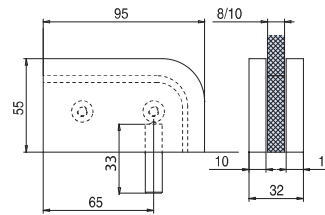


xla78


M11-R

- Cerniera per rotazione laterale con attacco a sopra luce destro.
- Double Link fitting for transom to wall right.
- Kupplung Oberlicht - Wand rechts. NS

▶ G.55

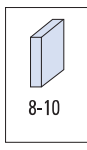
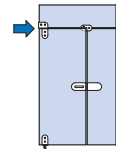
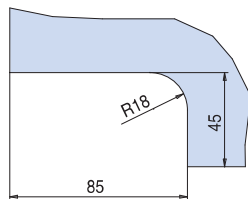
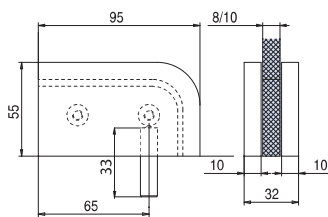


xla81-1


M11-L

- Cerniera per rotazione laterale con attacco a sopra luce sinistro.
- Link fitting for transom to wall left.
- Kupplung Oberlicht - Wand links. NS

▶ G.56

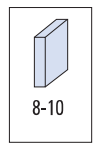
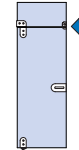
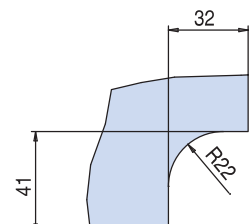
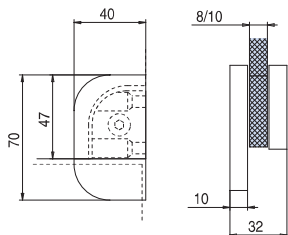


xla81-1


M12

- Battuta per porta singola con attacco a sopra luce.
- Stop fixed on overpanel left/right.
- Anschlag fest am Oberlicht links/rechts. NS

▶ G.57

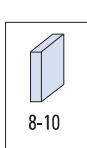
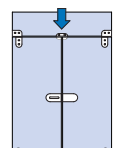
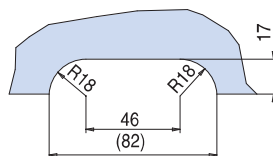
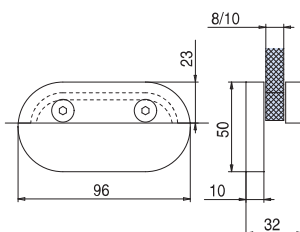


xla81-1


M13

- Battuta per porta doppia con attacco per sopra luce.
- Double stop fixed on overpanel.
- Doppelter Anschlag, fest am Oberlicht. NS

▶ G.52

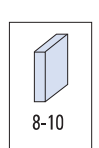
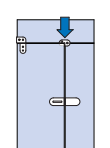
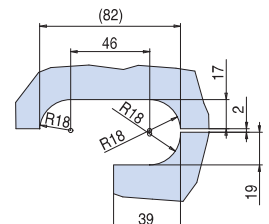
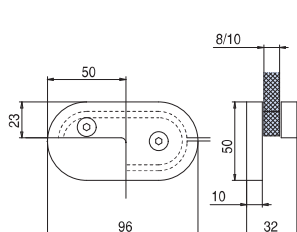


xla80


M14

- Battuta per porta singola con attacco a sopra luce e fisso laterale.
- Stop fixed on overpanel and side panel left / right.
- Anschlag fest am Oberlicht und Seitenteil links / rechts. NS

▶ G.53

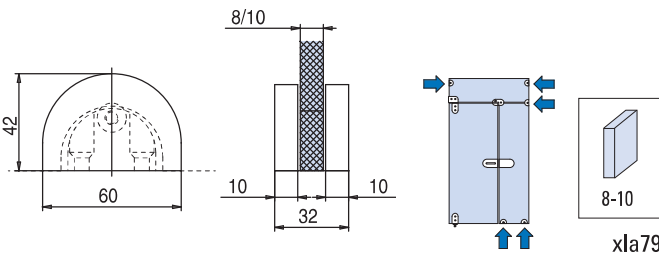


xla80-1



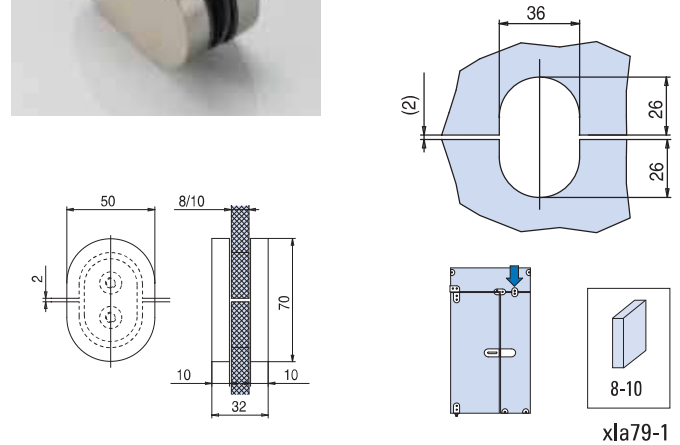
M9
 • Supporto vetro fisso.
 • Wall connector.
 • Wandhalter.
 NS

€ ► G.51



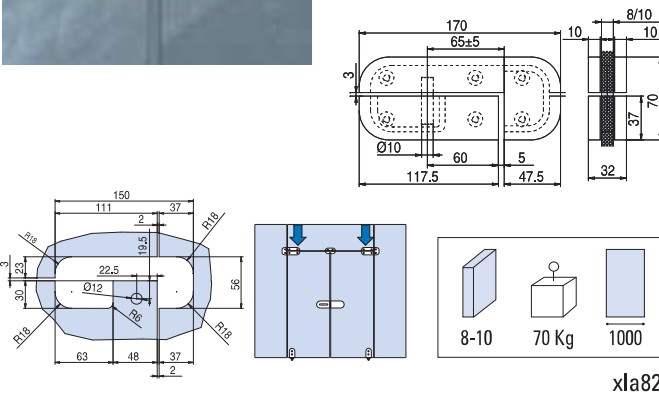
M15
 • Morsetto per aggancio due vetri.
 • Connector glass-glass.
 • Verbindungsbeschlag Glas-Glas.
 NS

€ ► G.54



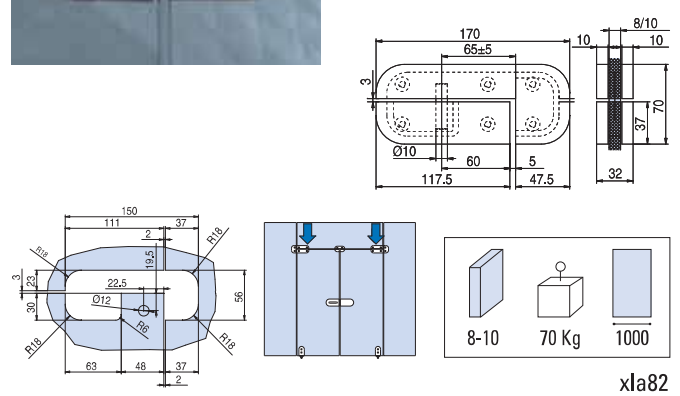
M16-L
 • Cerniera regolabile con attacco a sopraluce e fisso laterale sinistra.
 • For overpanel and side panel left.
 • Winkeloberlichtbeschlag. Links.
 NS

€ ► G.59



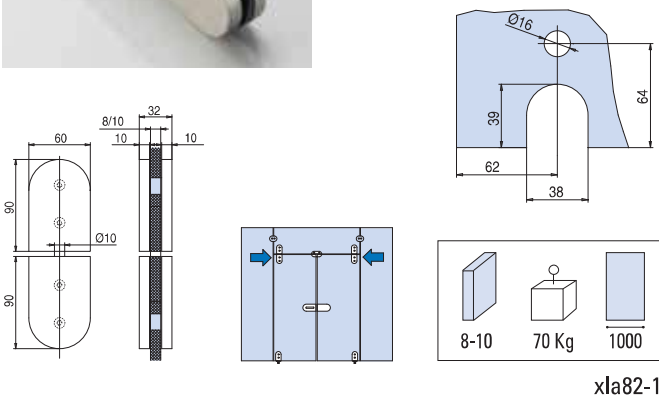
M16-R
 • Cerniera regolabile con attacco a sopraluce e fisso laterale destra.
 • For overpanel and side panel right.
 • Winkeloberlichtbeschlag. Rechts.
 NS

€ ► G.58



M1-SET
 • Set Cerniere superiore e sopraluce con perno.
 • Overpanel/top pivot set.
 • Set Oberes / Oberlicht Pendeltürbänder.
 NS

€ ► G.60



XT-83 B
 • Perno a pavimento con quadro tedesco ovale.
 • Floor pivot with German profile spindle.
 • Bodenbuchse mit flachkonischer Achse.

€ ► G.50

