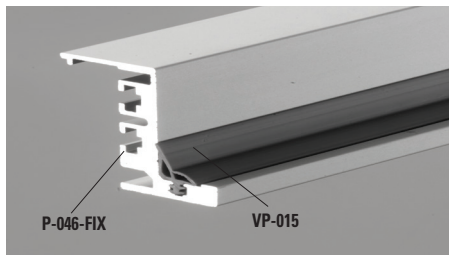
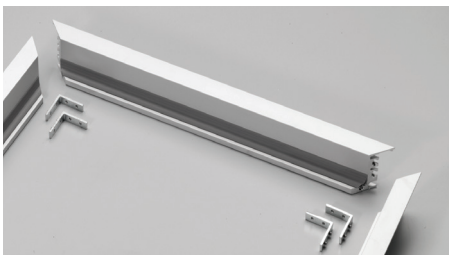


# P-045

**MY METALGLAS**


## P-045

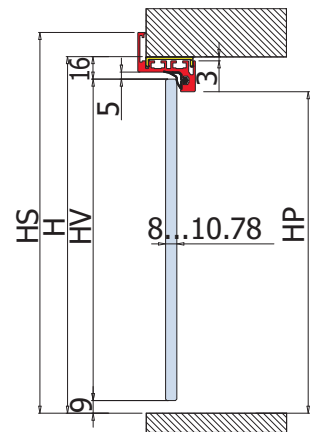
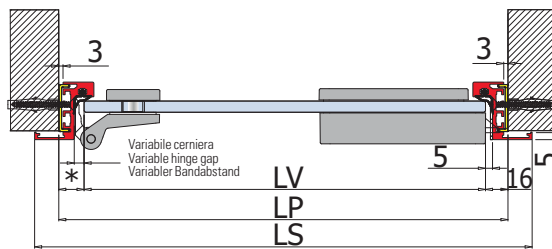
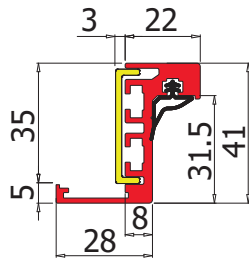
- Profilo stipite in alluminio anodizzato naturale lavorato a misura cliente. Tagliato a 45°
- Door frame complete in anodised aluminium. Corners cut 45° available in the requested sizes.
- Anschlagtürzarge komplett aus eloxiertem Aluminium, erhältlich in den gewünschten Maßen mit Schnitt 45°.

## P-046-FIX

- Profilo stipite in alluminio anodizzato naturale fornito in barre, escluse guarnizioni VP-015.
- Aluminium door jamb profile natural anodised without gaskets VP-015, supplied in bars.
- Aluminiumprofil Türzarge natur-eloxiert in Stangen, ohne Dichtungen VP-015.

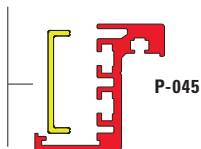
## P-047

- Squadrette per stipite P-045, P-046.
- Connectors for profile P-045, P-046.
- Verbinder für Profile P-045, P-046.



## P-034

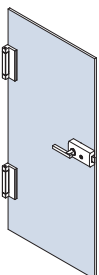
- Profilo optional per regolazione P-045, P-046
- Optional wall profile for adjustment P-045, P-046
- Wandprofil für Verstellung P-045, P-046


 Con/With/Mit **P-034**

$$\begin{aligned} HS &= H + 17 \\ LS &= LP + 34 \end{aligned}$$

 Senza/Without/Ohne **P-034**

$$\begin{aligned} HS &= H + 20 \\ LS &= LP + 40 \end{aligned}$$


 Con/With/Mit **P-034**
**V-409 V-509 V-709 V-809 V-909 V-729**

$$\begin{aligned} LV &= LP - (18^* + 16) \\ HV &= H - 25 \end{aligned}$$

**V-701 V-704**

$$\begin{aligned} LV &= LP - (19^* + 16) \\ HV &= H - 25 \end{aligned}$$

 Senza/Without/Ohne **P-034**
**V-409 V-509 V-709 V-809 V-909 V-729**

$$\begin{aligned} LV &= LP - (15^* + 13) \\ HV &= H - 22 \end{aligned}$$

**V-701 V-704**

$$\begin{aligned} LV &= LP - (16^* + 13) \\ HV &= H - 22 \end{aligned}$$