

# BRIXIA TELESCOPICO



## MY METALGLAS

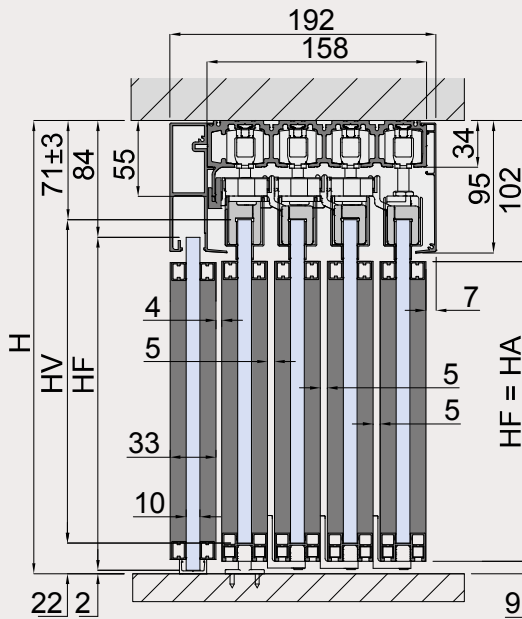
Componi la tua anta per quantificare i traversini da ordinare  
 Configure your panel to calculate the cross profiles  
 Konfigurieren Sie Ihre Tür und berechnen Sie automatisch die Querprofile

Sliding system	DIV-1445 SYNCHRO	DIV-1485 MECH
Max	100 kg	100 kg
Soft-close	80 kg (optional)	80 kg (optional)

V-1224 OPTIONAL SOFT-CLOSE	
 8-10	 520 min 1000 max
 700 min 1 pc	 970 min 2 pcs

A soffitto  
Ceiling  
Decke

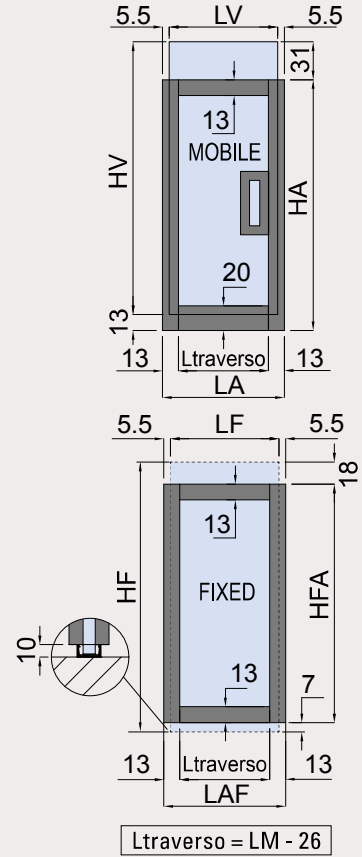
SET 1



$$\begin{aligned} HV &= H - 93 \\ HF &= H - 86 \\ HA/HFA &= H - 111 \end{aligned}$$

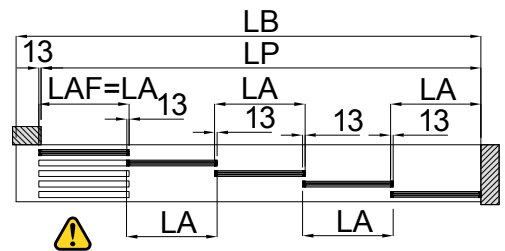
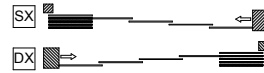
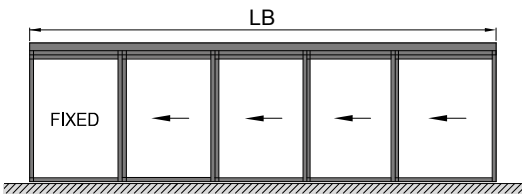
xme661b

Anta intelaiata "Divina"  
Framed door "Divina"  
Gerahmte Tür "Divina"



$$\text{Ltraverso} = \text{LM} - 26$$

SET 1



$$\begin{aligned} LB &= LP + LA + 100 \\ LA/LAF &= (LP + 52) / 4 \\ LV/LF &= LA - 11 \end{aligned}$$



È obbligatorio rispettare la lunghezza del binario come indicato nella formula per allineare i pannelli.  
 It is mandatory to calculate the length of the track as in the formula for aligning the panels.  
 Zum Ausrichten der Paneele ist unbedingt erforderlich, die in der Formel angegebene Länge der Schiene einzuhalten.



**DIV-1445 SYNCHRO**  
TRASCINAMENTO SYNCHRO CON CINGHIA  
SYNCHRO DRAGGING SYSTEM WITH TOOTHED BELT  
SYNCHRO MITNEHMER KIT MIT ZAHNRIEMEN



**DIV-1485 MECH.**  
TRASCINAMENTO MECCANICO  
MECHANICAL DRAGGING SYSTEM  
MIT MECHANISCHEM MITNEHMER