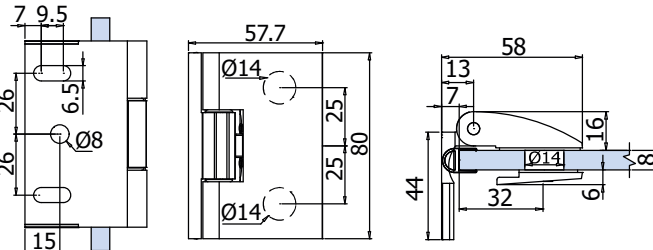




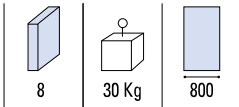
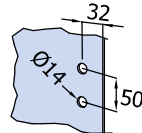
€ BX.235


**B-201**

- Cerniera a scatto vetro/muro apertura a tirare. Materiale: Ottone.
- Glass to wall single action clicking hinge, pull to open. Material: Brass
- Anschlagtürband Glas-Wand nach außen öffnend. (Selbstschliessende Bänder) Material: Messing.



- Con guarnizione B-145
- With gasket B-145
- Mit Dichtung B-145

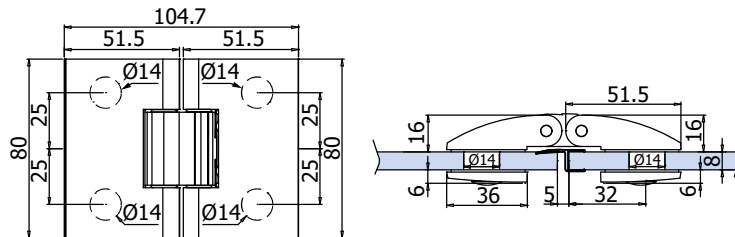


NUOVO MODELLO  
IN ZAMA IN ARRIVO  
NEW MODEL ZAMAK  
COMING SOON

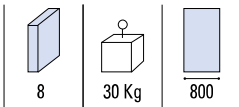
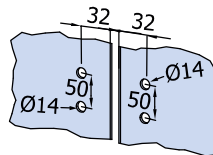
xmc015


**B-202**

- Cerniera a scatto vetro/vetro apertura a tirare. Materiale: Ottone.
- Glass to glass single action clicking hinge pull to open. Material: Brass.
- Anschlagtürband Glas-Glas, nach außen hin öffnend. (Selbstschliessende Bänder) Material: Messing.



- Con guarnizione B-149
- With gasket B-149
- Mit Dichtung B-149

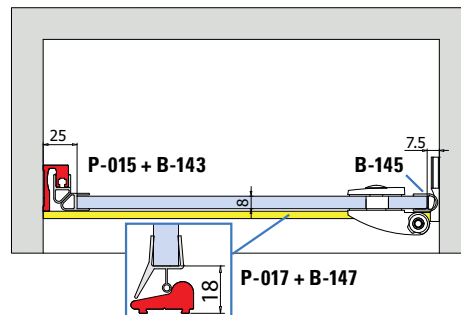
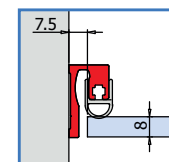
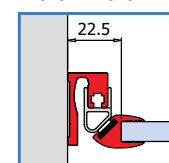


NUOVO MODELLO  
IN ZAMA IN ARRIVO  
NEW MODEL ZAMAK  
COMING SOON

xmc015



- Applicazione con profilo battuta P-015 (optional).
- Installation with door stop profile P-015 (optional).
- Verwendung mit Türanschlagsprofil P-015 (optional).


**P-015 + B-146**

**P-015 + P-016 + B-148**


**CR**  
Cromo lucido  
Polished chrome  
Chrom glänzend

**NS**  
Nickel satinato  
Satin nickel  
Ähnlich Edelstahl matt

