

# BOX DOCCIA SEPARÉ

SHOWERS AREA SEPARÉ  
 DUSCHTRENNWAND SEPARÉ



## SEPARÉ

▶ 178



- BARRE DI SUPPORTO QUADRE REGOLABILI
- ADJUSTABLE SQUARE SUPPORT BARS
- VERSTELLBARE ECKIGE STABILISATIONSSTANGEN

▶ 180



- BARRE DI SUPPORTO QUADRE
- SQUARE SUPPORT BARS
- ECKIGE STABILISATIONSSTANGEN

▶ 184



- BARRE DI SUPPORTO TONDE
- ROUND SUPPORT BARS
- RUNDE STABILISATIONSSTANGEN

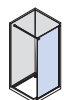
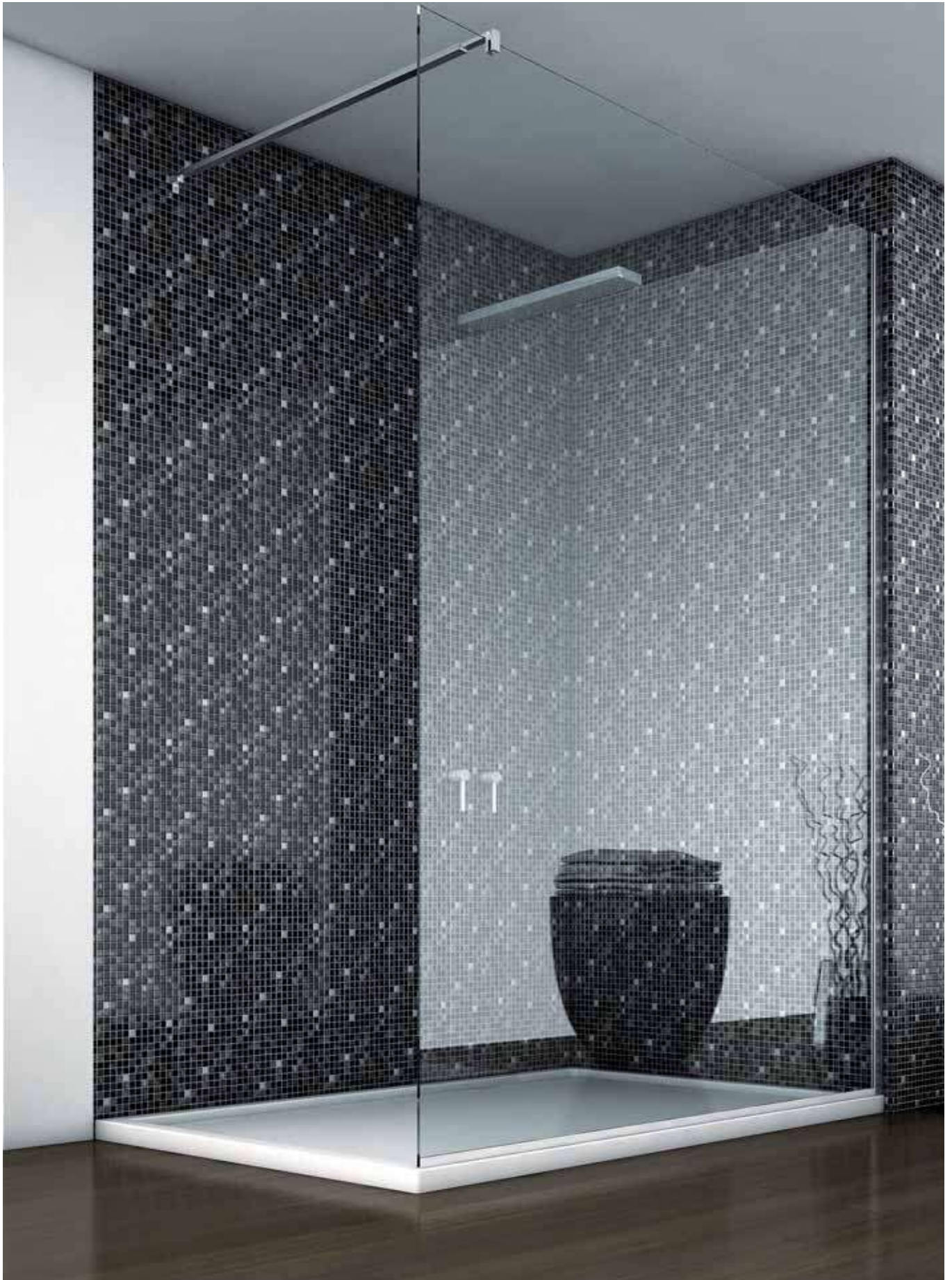
▶ 185



SEPARÉ

## SEPARÉ

BOX DOCCIA SEPARÉ / SHOWERS AREA SEPARÉ / DUSCHTRENNWAND SEPARÉ

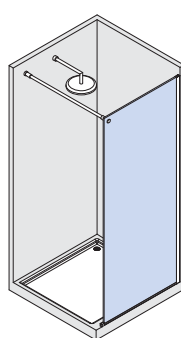
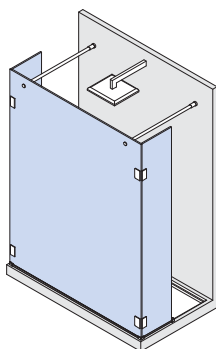
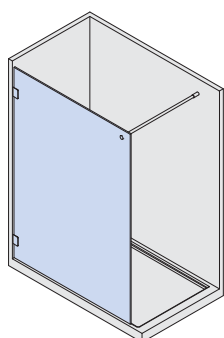


SEPARÉ

- Sistema per docce aperte tutto vetro senza porte.
- Walk-in systems for open shower areas without doors.
- Walk-in Systeme für offene Duschen ohne Türen.



- Alcune tipologie di applicazione
- Some application typologies
- Einigen kompositionsmöglichkeiten des system



## BARRE DI SUPPORTO TONDE

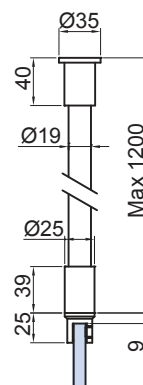
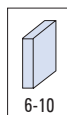
### ROUND SUPPORT BARS / RUNDE STABILISATIONSTANGEN



#### B-189

- Barra di fissaggio vetro/soffitto.
- Glass to ceiling fixing bar.
- Stabilisationsstange Glas-Decke.

CR



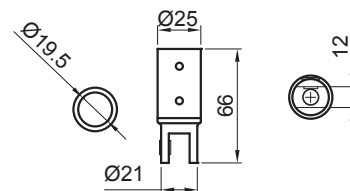
xfb-086



#### B-185-S

- Attacco verticale a vetro per tubo Ø 19.
- Vertical glass clamp for Ø 19 mm tube.
- Vertikal Rohrverbinder / Glas für Rohr Ø 19 mm.

CR



xfb-089



SEPARÉ

# BARRE DI SUPPORTO TONDE

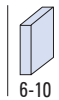
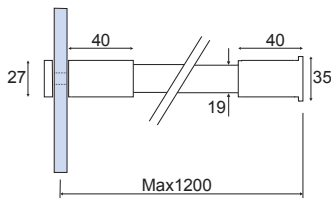
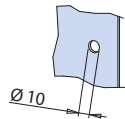
## ROUND SUPPORT BARS / RUNDE STABILISATIONSTANGEN



### B-171

- Barra di fissaggio vetro/muro.
- Glass to wall fixing bar.
- Stabilisationsstange Glas/Wand.

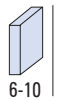
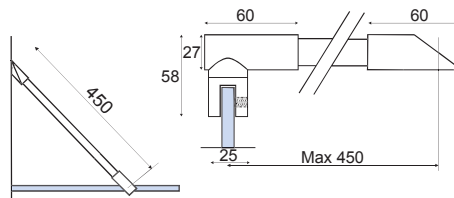
CR - NS



### B-160

- Barra di fissaggio vetro/muro 45°.
- Glass to wall 45° fixing bar.
- Stabilisationsstange Glas-Wand 45°.

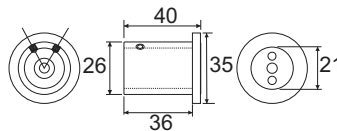
CR - NS



### B-174

- Terminale a muro per barre fermavetro Ø 19 mm.
- Wall fixing bar end for Ø 19 mm tube.
- Drehbar Halterungen für Stabilisationsstange.

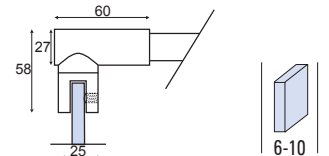
CR - NS



### B-185

- Attacco a vetro per tubo Ø 19 mm.
- Ottone forgiato.
- Glass clamp for 19 mm tube. Forged brass.
- Rohrverbinder / Glas für Rohr Ø 19 mm.
- Messing geschmiedet.

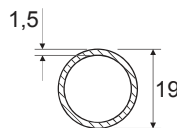
CR - NS



### B-175 (L=1200 mm) B-176 (L=2000 mm)

- Tubo inox lucido Ø 19 mm.
- Polished stainless steel tube Ø 19 mm.
- Halterungen für Stabilisationsstange.

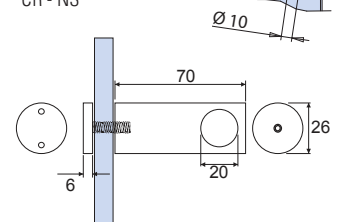
CR - NS



### B-181

- Raccordo vetro-barra a 90°.
- Connector Glass-bar 90°.
- Verbinder Glas/Rohr 90°.

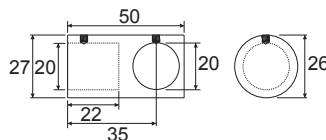
CR - NS



### B-172

- Raccordo di congiunzione a 90° per tubo Ø 19 mm.
- Forged brass 90° connection joint for 19 mm tube.
- Stabilisationsstange T-Stück für 19 mm Rohr.

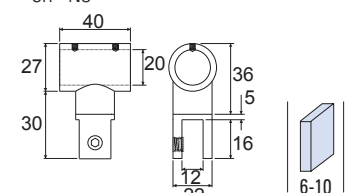
CR - NS



### B-163

- Attacco a vetro foro passante per tubo Ø 19 mm.
- Glass clamp for 19 mm tube.
- Rohrverbinder/Glas für Rohr Ø 19 mm.

CR - NS

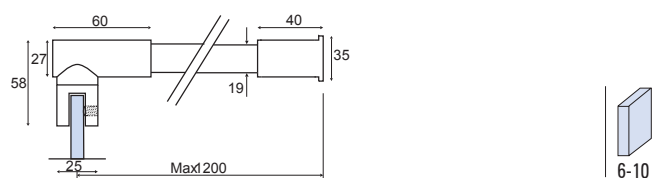


SEPARÉ



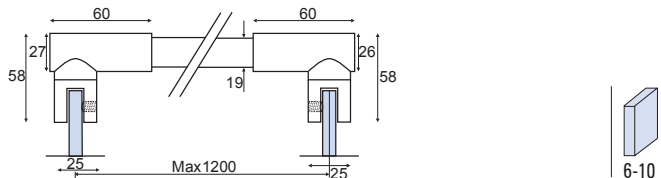
- B-161**
- Barra di fissaggio vetro/muro 90°.
  - Glass to wall 90° fixing bar.
  - Stabilisationsstange Glas-Wand.

CR - NS



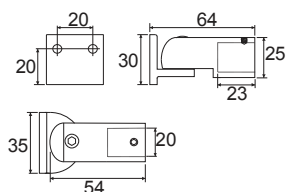
- B-162**
- Barra di fissaggio vetro/vetro.
  - Glass to glass fixing bar.
  - Stabilisationsstange Glas-Glas.

CR - NS



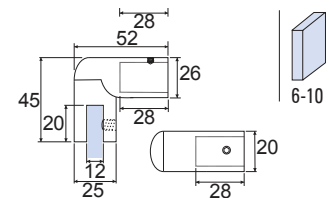
- B-167**
- Fermavetro snodata a muro.
  - Ends Forged brass.
  - Halterungen für Stabilisationsstange.

CR - NS



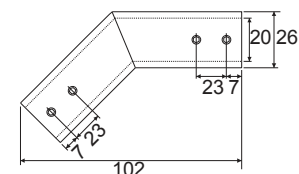
- B-166**
- Terminali per barra.
  - Articuled glass to wall bar.
  - Drehbar Messing geschmiedet.

CR - NS



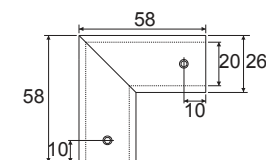
- B-164**
- Raccordo a 135° per tubo Ø19 mm.
  - 135° connector for 19 mm tube Forged brass.
  - Rohrverbinder 135° für Rohr Ø 19 mm.

CR - NS



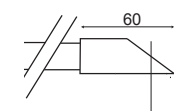
- B-165**
- Raccordo a 90° per tubo Ø19 mm.
  - 90° connector for 19 mm tube.
  - Rohrverbinder 90° für Rohr Ø 19 mm.

CR - NS



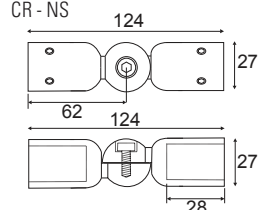
- B-184**
- Terminale a muro 45° per barre fermavetro Ø 19 mm.
  - Wall fixing bar 45° end for Ø 19 mm tube.
  - Drehbar Halterungen 45° für Stabilisationsstange.

CR - NS



- B-173**
- Raccordo regolabile per tubo Ø 19 mm.
  - Adjustable connector for Ø 19 mm tube.
  - Verbinder für 19 mm Rohr Verstellbar.

CR - NS



SEPARÉ

## BARRE DI SUPPORTO TONDE ROUND SUPPORT BARS / RUNDE STABILISATIONSTANGEN

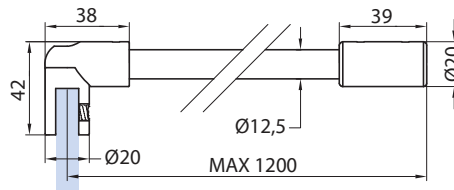
- Materiale: Ottone.
- Material: Brass.
- Material: Messing.



### B-211

- Barra di fissaggio vetro/muro.
- Glass to wall fixing bar.
- Stabilisationsstange Glas/Wand.

CR - NS - NO



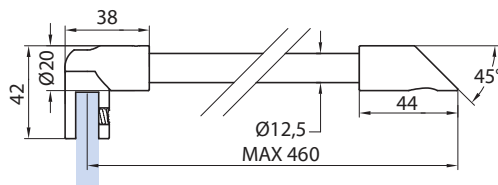
6-10



### B-210

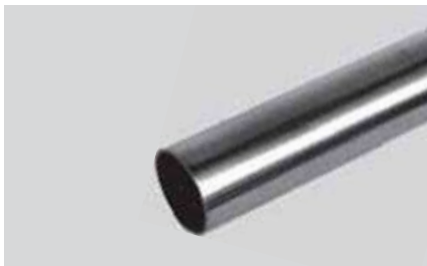
- Barra di fissaggio vetro/muro 45°.
- Glass to wall 45° fixing bar.
- Stabilisationsstange Glas-Wand 45°.

CR - NS - NO



6-10

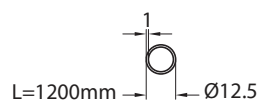
## COMPONENTI / COMPONENTS / EINZELTEILE



### B-213 (L=1200 mm)

- Tubo inox lucido Ø 12,5 mm.
- Polished stainless steel tube Ø 12,5 mm.
- Halterungen für Stabilisationsstange.

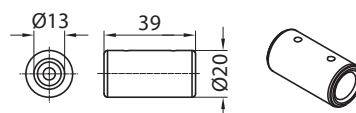
CR - NS - NO



### B-214

- Terminale a muro per barre fermavetro Ø 12,5 mm.
- Wall fixing bar end for Ø 12,5 mm tube.
- Drehbar Halterungen für Stabilisationsstange.

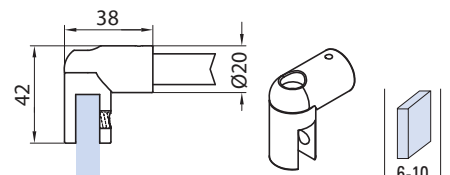
CR - NS - NO



### B-215

- Attacco a vetro per tubo Ø 12,5 mm. Ottone forgiato.
- Glass clamp for 12,5 mm tube. Forged brass.
- Rohrverbinder / Glas für Rohr Ø 12,5 mm. Messing geschmiedet.

CR - NS - NO



6-10

**CR**  
Cromo lucido  
Polished chrome  
Chrom glänzend  
188

**NS**  
Nickel satinato  
Satin nickel  
Ähnlich Edelstahl matt

**NO**  
Nero opaco  
Matt black  
Schwarz matt